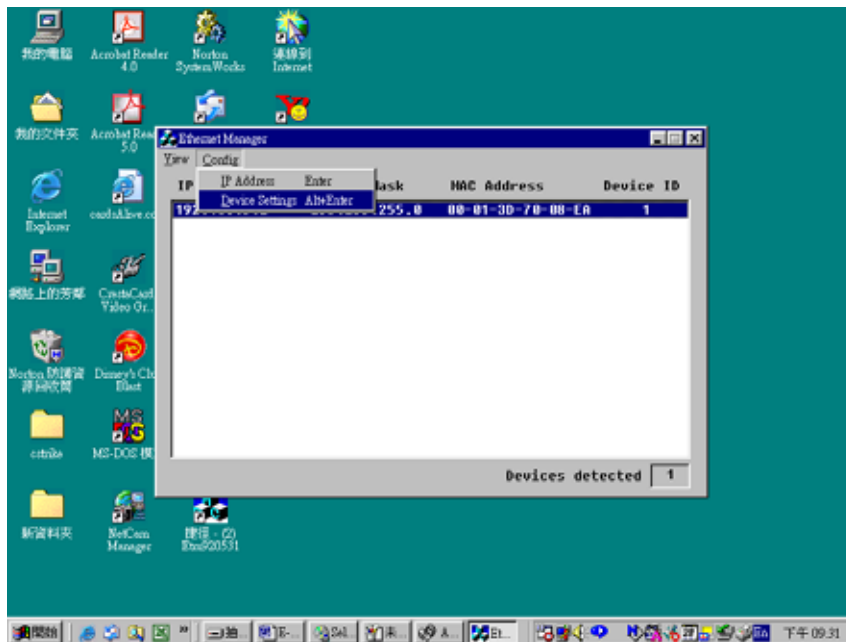


## Quick Installation Guide

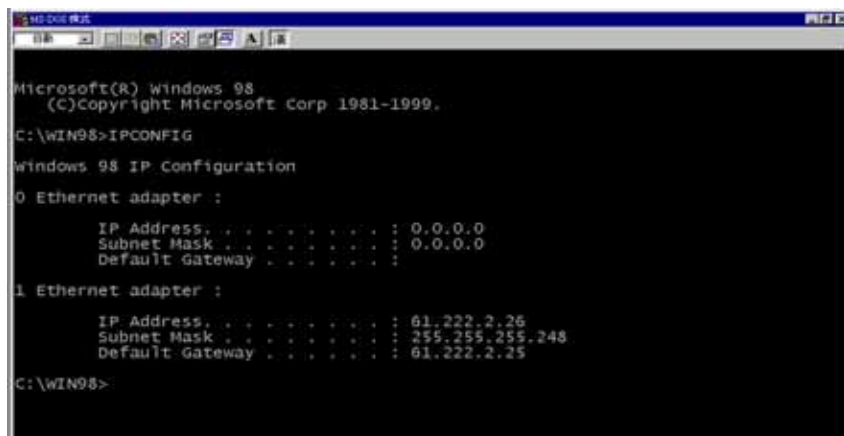
This is for RS-232 / 422 / 485 To TCP/IP Converter

Please refer to the quick installation guide for your quick installation

1. Connect RJ-45 cable between HUB and Converter
2. Converter Power On
3. To Run the ETM.EXE for it can find the IP of TCP/IP Converter

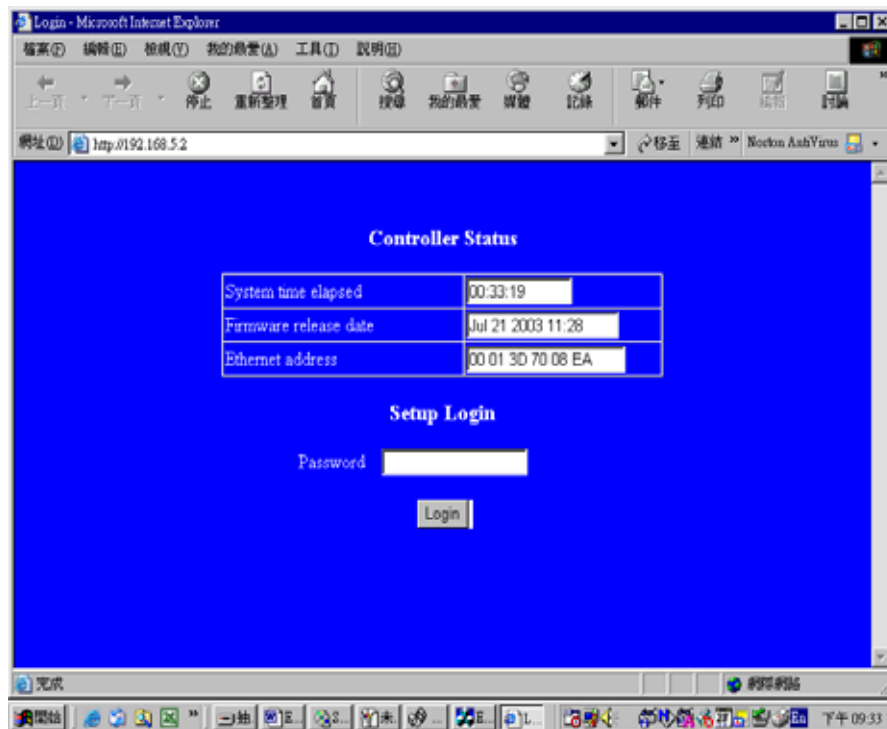


4. Under DOS mode run IPCONFIG



5. You can know the ip address of PC : 192.168.1.22
6. You can change the IP of converter to 192.168.1.XXX and press CONFIG – Device-Settings for it can use IE Browser to enter the

7. Press login to enter and you can modify parameter of converter



8. Please see the MANUAL of CONVERTER FOR details

